

NUT-HEX, LIGHT, THIN (TYPE NTE)

Lock Fastener Co., LTD.

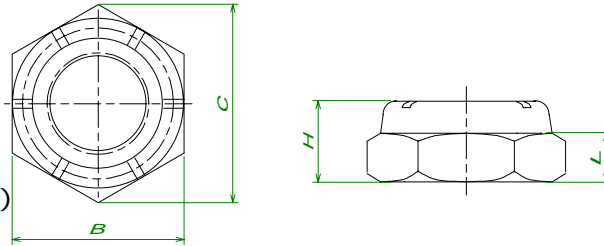
1-1 Kusunekocho Yao-city Tel 0729-97-9990

Osaka Japan 581-0814 Fax 0729-97-0115

E-Mail lockfastener@kawachi.zaq.ne.jp

NYLON INSERT LOCKING NUTS (NTM TYPE)

MIL-N-25027



AS APPLICABLE

Scale = (mm)

Size	NC NF	B		H		C		L	
		MAX	MIN	MAX	MIN	MAX	MIN	MAX	MIN
1 / 4	20 28	11.15	10.93	5.53	4.78	12.77	12.02	3.55	2.80
5 / 16	18 24	12.75	12.45	6.73	5.97	14.52	13.77	4.39	3.64
3 / 8	16 24	14.32	14.05	7.13	6.38	16.33	15.57	4.19	3.43
7 / 16	14 20	15.92	15.65	8.33	7.57	18.11	17.35	6.09	5.34
1 / 2	13 20	19.10	18.83	8.33	7.57	21.71	20.96	5.20	4.45
9 / 16	12 18	22.27	21.98	9.49	8.74	25.32	24.57	6.09	5.34
5 / 8	11 18	23.87	23.58	10.31	9.55	27.07	26.32	7.11	6.60
3 / 4	10 16	27.32	26.72	10.69	9.94	30.63	29.87	7.69	6.94
7 / 8	9 14	31.80	31.47	12.29	11.53	36.01	35.26	9.01	8.26
1 "	8 12 14	36.57	36.25	14.68	13.10	41.40	40.64	10.66	9.90
1 - 1 / 8	7 12	41.32	41.00	17.07	15.49	46.38	46.38	12.70	12.70
1 - 1 / 4	7 12	46.07	45.75	19.43	17.86	51.76	51.76	13.28	13.28
1 - 3 / 8	6 12	51.00	50.11	20.85	19.28	57.12	57.12	12.52	12.52
1 -	6	55.80	54.84	21.03	19.46	61.37	61.37	14.35	14.35

1 / 2	1 2								
-------	-----	--	--	--	--	--	--	--	--

COPYRIGHT 2001 LOCK FASTENER CO.,LTD. ALL RIGHTS RESERVED.